



DuraPlan
— RESTROOMS —

EXTENDED COLOUR CHART

DuraLam Anti Bacterial Compact Laminate Panel

09 972 7682
sales@duraplan.co.nz
www.duraplan.co.nz



HARMFUL BACTERIA NOT ONLY GROWS EXPONENTIALLY BUT THRIVES PRACTICALLY ANYWHERE.

Invisible to the naked eye, these harmful bacteria are on most surfaces that our hands come into contact with on a daily basis. These bacteria breach our immune system, break down defences and attack good body cells which we need to fight off illness and disease.

This is why DuraPlan has introduced the DuraLam range.

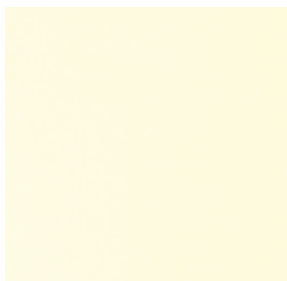
DuraLam is an Antibacterial Range of compact laminate that gives you the power to eliminate almost 99% of common bacteria. This is not only the most advanced and protective laminate in New Zealand but the world over.

Now with DuraLam Antibacterial compact laminates, you can continue your healthy lifestyle knowing you have done everything you can to keep you and your loved ones protected.

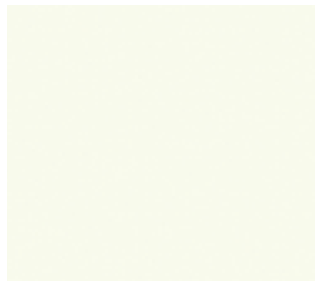


**DURALAM BOARD WILL KEEP
YOUR ENVIRONMENT CLEAN!**

▯▯ Solids



124 SUD
Mysore Ivory



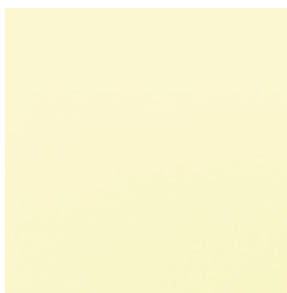
116 SUD
Pearly White



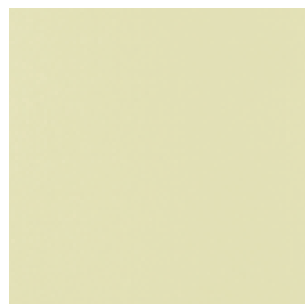
GSB 113
Frosty White



9942 Lucent Sheer



GSA 121
Ivory



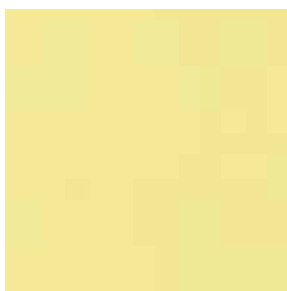
GSC 133
Moon Stone



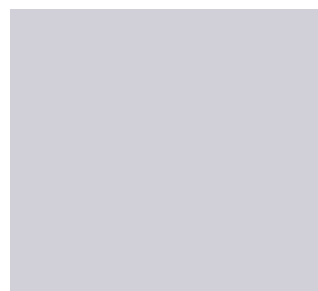
GSA 275
Pearl Grey



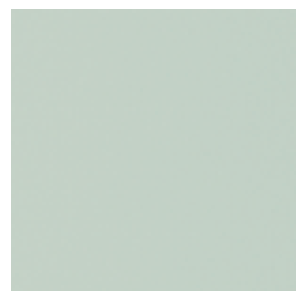
471 SUD
Arctic Grey



GSC 230
Cream Yellow



289 Beryl



273 SUD
Sky Grey



GSB 268
Dust



GSB 141
Beige



GSC 166
Blush Pink

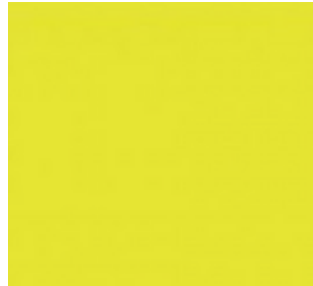


137 SUD
Mustard

 Solids



22114 Salmon Orange



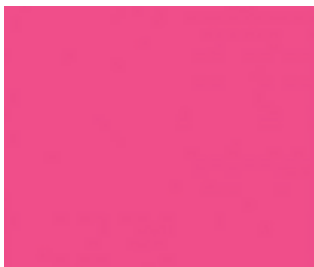
GSC 231
Lime Yellow



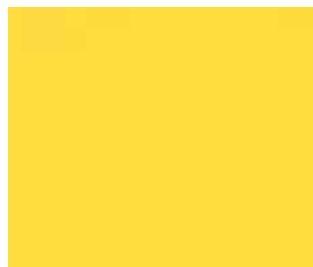
GSC 257
Olive



GSC 284
Ozone



GSC 173
Barbie Pink



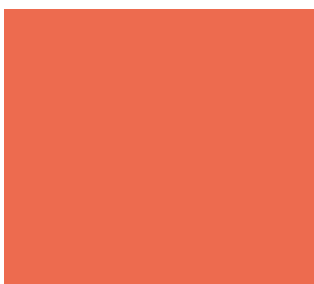
207 Divine Yellow



243 SUD
Sea Green



GSC 464
Peacock



GSC 215
Tangerine



GSC 217
Light Orange

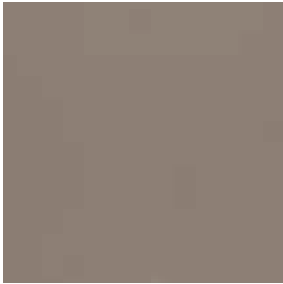


259 SUD
Lime



291 SUD
Electric Blue

 Solids



GSC 264
Bronze



467 SUD
Mermaid



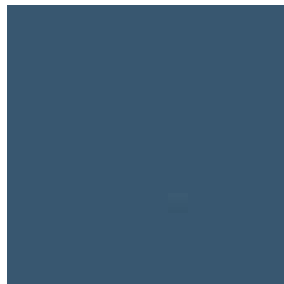
138 SUD
Terracotta



GSC 134
Mud Ash



261 SUD
Dark Grey



GSC 297
Blue Galaxy



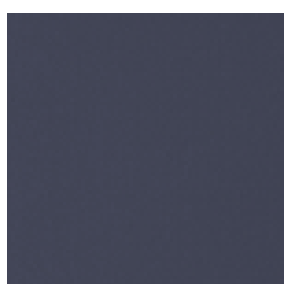
GSC 201
Maroon



245 SUD
Dark Green



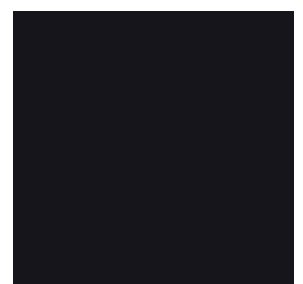
GSC 279
Char Grey



GSC 281
Navy Blue



GSC 212
Viola



GSA 401
Black

Patterns



923 SUD
Meta Silver



5788 SUD
Gris Feria



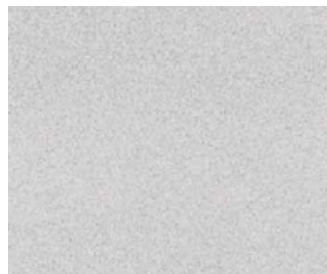
5774 SUD
Statuario



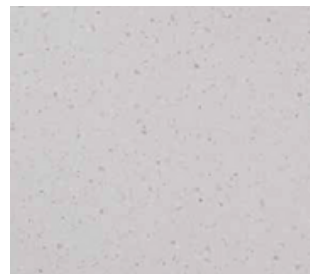
5566 SUD
Clear Mesh



937 SUD
Chicago Steel



5772 SUD
Nebula



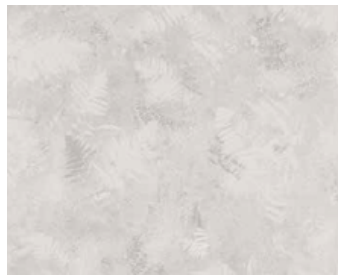
5581 SUD
Torino Pearl



44757 Piazza



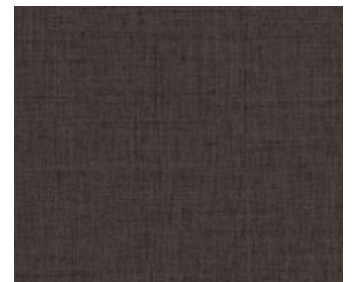
44281 Crust



5587 SUD
Smoky Fern



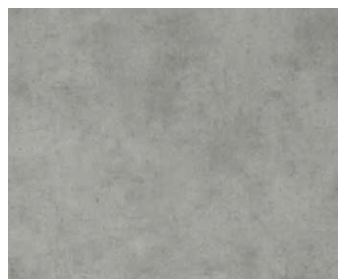
5575 SUF
Black Manor



GSC 5568
Smoky Mesh



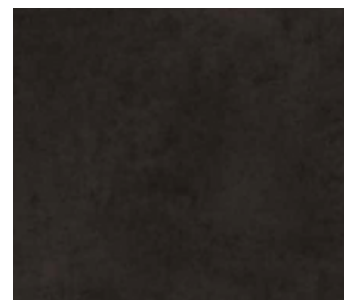
5771 SUD
Almond Pearl



5577 SUD
Houston



GFA 5853
Alu Taint



5578 SUD
Madison

Woodgrains



GWC 682
Hiland Pine



GSC 9610
Pure Ash



682 Pine



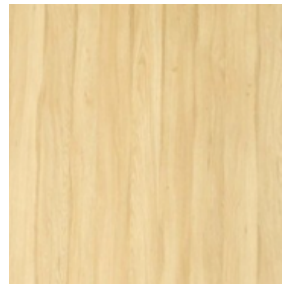
GWA 738
Oak



GSC 5566
Clear Mesh



5385 SUD
Dany Wood Taupe



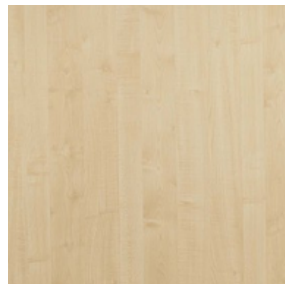
GWE 5076
Primeval Oak



GWC 770
Douglas Fir



5385 SUD
Plaster Wood



GWB 5006
Thansau Maple



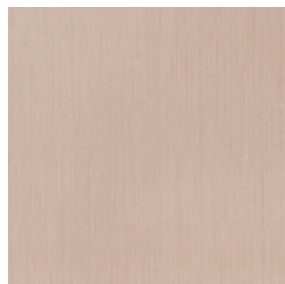
GSC 5427
Refresh Oak



GSC 9611
Innate Ash



GWA 719
Mangfall Beach



GWE 5525
Hickory Oak



GSC 5333
Nordic Walnut



GSC 5333
Travertino Biscotti

Woodgrains



GSC 9611
Innate Ash



5353 SUD
Rosenheim Elm



5386 SUD
Rovere Bardolino



5394 SUD
Nordic Acacia



5388 SUD
Walton Oak



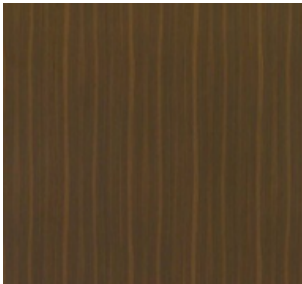
5375 SUD
Saturno Walnut



5334 SUD
Canyon Walnut



5389 SUD
Salvador Oak



GWC 5018
Brookes Walnut



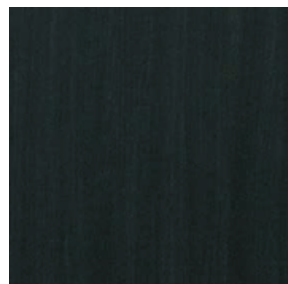
5387 SUD
Rovere Casto



5061 SUD
Fine Wedge



GWE 5061
Thansau Maple



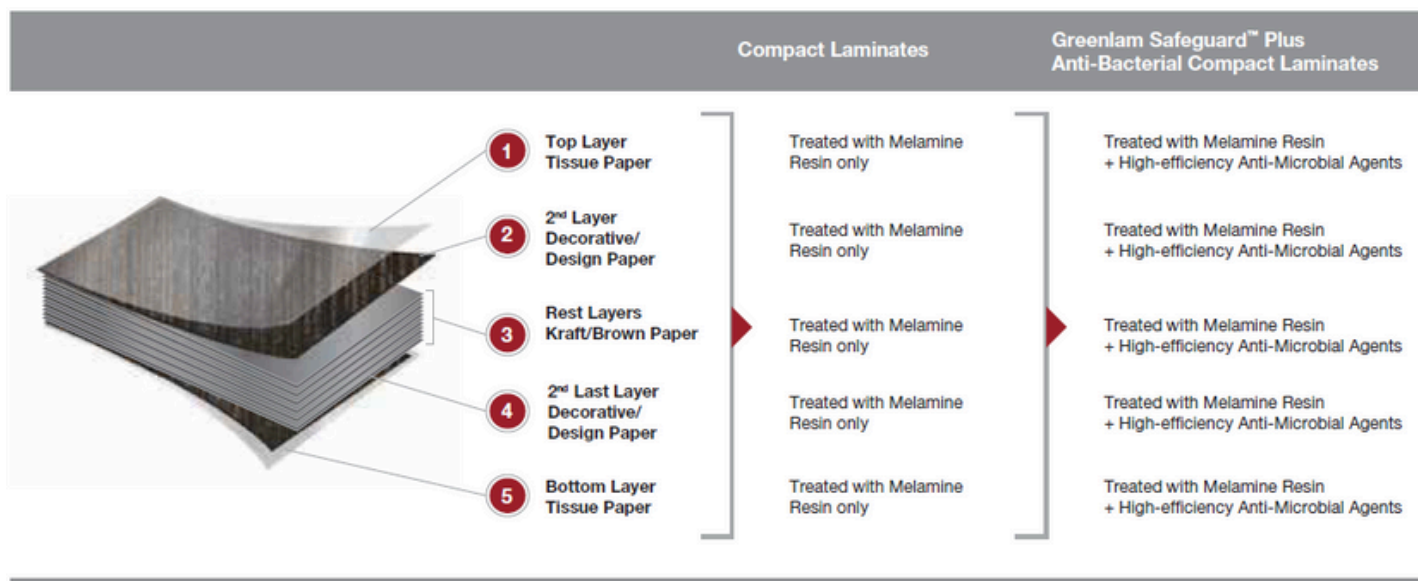
GSC 5331
Midnight Acacia



5378 SUD
Dandy Wood Anthracite

DURALAM TECHNICAL SPECIFICATIONS

Duralam protection layer by layer breakdown



TECHNICAL SPECIFICATION VS STANDARDS

PROPERTIES	UNIT	Specified Values As Per DIN EN 438, BSEN 438 & IS 1995 :2046	Duralam Typical Value
Thickness tolerance	mm	0.5 ± 13.0	0.28 ± 13.0
Resistance to dry heat at °180C	Grade	Not worse than 4	5
Resistance to surface wear	Rev.	350 (Min.)	400
Resistance to immersion in boiling water			
a) Mass increase	%	2.0 (Max.)	0.50
b) Thickness	%	2.0 (Max.)	0.70
c) Appearance	Grade	Not worse than 4	5
Dimensional stability at deviated temperature			
a) Longitudinal	%	0.06 (Max.)	0.03
b) Transverse	%	0.53 (Max.)	0.12
Dimensional stability at °20C			
a) Longitudinal	%	0.16 (Max.)	0.08
b) Transverse	%	0.28 (Max.)	0.13
Resistance to impact by large diameter ball			
a) Drop height	mm	1800	2000
b) Diameter of indentation	mm	10 (Max.)	2
Resistance to scratch	N	2.0 (Min.)	2.5
Resistance to staining			
a) Group 1 & 2	Grade	Not worse than 5	6
b) Group 3 & 4	Grade	Not worse than 4	5
Resistance to colour change			
a) In Xerox Arc Light	Grade	Not worse than 6	6
b) In Enclosed Carbon Arc Light	Grade	Not worse than 5	5
Resistance to cigarette burns	Grade	Not worse than 3	4
Resistance to steam	Grade	Not worse than 4	5
Resistance to crazing	Grade	Not worse than 4	5
Resistance to moisture	Grade	Not worse than 4	5
Flexural modulus	Mpa	10000 (Min.)	11000
Flexural strength	Mpa	100 (Min.)	120
Tensile strength	Mpa	70 (Min.)	90
Density	g/cm³	1.35	1.40

For enquiries, further information, pricing or placing order please contact Duraplan Systems Ltd

Phone +64 9 972 7682 | Email sales@duraplan.co.nz
PO Box 4477, Kamo | 6 Springs Flat Road, Whangarei, New Zealand

www.duraplan.co.nz