



DuraPlan
— RESTROOMS —

TECHNICAL GUIDE

City Trim Kindy Range

Suitable for all kindergarten,
primary schools & youth centres

09 972 7682
sales@duraplan.co.nz
www.duraplan.co.nz

Resistant to : Impact, Moisture, Wear & Graffiti

| SYSTEM INFORMATION

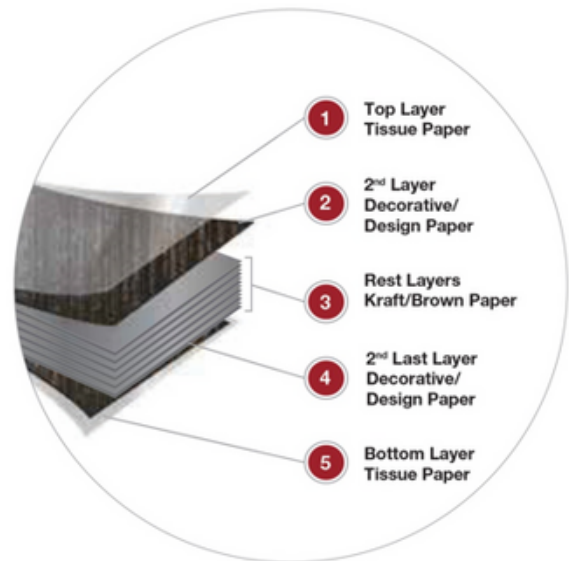
- 13mm compact laminate panels which are anti-bacterial, impact, moisture, wear and graffiti resistant, easy to clean/keep clean and have a 10-year panel integrity
- Solid Aluminium foot base/Pilaster Base. Spans the width of pilasters
- 1200mm in height
- Utilises aluminium profile feet and stainless steel hardware for ultimate robustness and style
- High quality brushed stainless hardware
- Quick and easy to install

| PANEL INFORMATION

- Available in standard 13mm thickness
- 13mm resin bonded core, Compact Laminate tested to IS EN 438-4
- Resistance too: Impact, Moisture, Wear & Graffiti
- Antibacterial - JIS 2 2801: Antibacterial eliminates the growth of early 99% of common forms of bacteria on any DuraLam surface growth of nearly 99% of common forms of bacteria
- Fire protection - NZBC C/AS2 - AS7
- We offer a 10 year guarantee on panel integrity
- Duralam Compact Laminate Panels are Greenguard

| ALUMINIUM INFORMATION

- **ALUMINIUM PILASTER BASE:** 90mm x 35mm extruded aluminium with 13mm panel cavity for pilasters. Silver or black anodised or powder coated finish
- **SUPPORT POST:** Square 40mm x 40mm Extruded Aluminium alloy 6060 with exposed face with anodised or powder coated finish.
- **WALL CHANNEL:** 13mm x 30mm x 25mm Extruded Aluminium alloy 6060 with exposed face with anodised or powder coated finish.
- **COLOUR OPTIONS:**
 - Silver Anodised (Standard)
 - Black Anodised
 - Powder Coated (Colours from the Dulux Range)



| PANEL COLOUR OPTIONS

The City Trim Kindy Range is available in:

- DuraLam Panel Colour Range - stocked & Extended Range
- Laminex Colour Range

| PANEL FINISH OPTIONS

The Compact Laminate Panel Finish is available in:

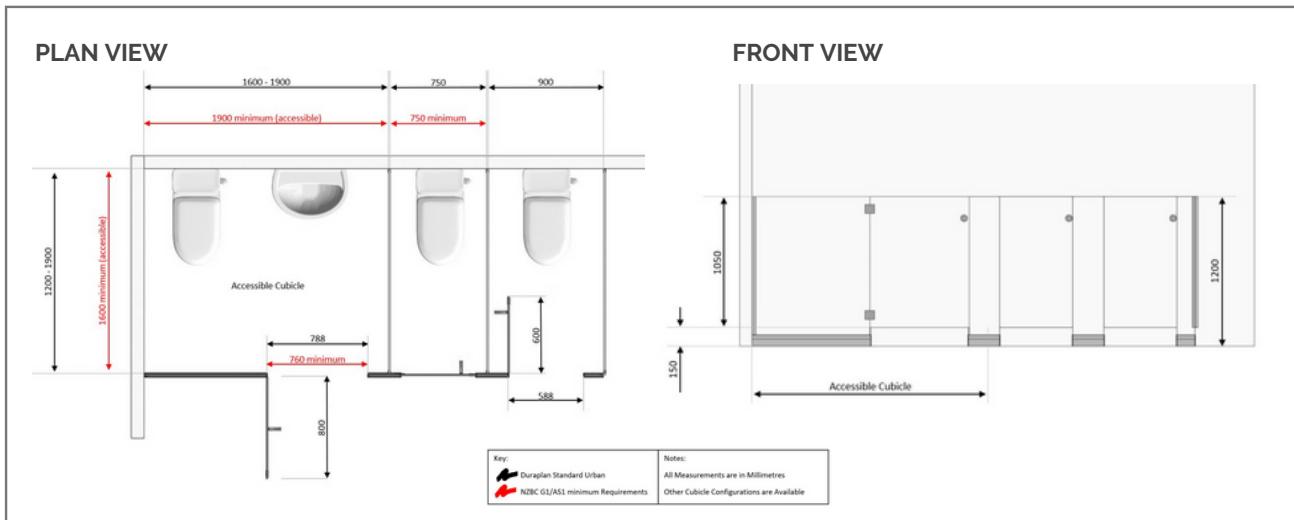
- Suede (Standard)
- Finguard (Anti-fingerprint)
- Gloss
- Decorative

| WARRANTY DETAILS

Our Standard Warranties are:

- 10 Years on Panel Integrity
- 2 Years on Hardware
- 2 Years on Installation

Resistant to : Impact, Moisture, Wear & Graffiti



| HARDWARE INFORMATION

FINISH:

- Quality and solid stainless hardware
- Brushed Stainless
- Black Powder Coated

MOUNTING:

- Concealed Screw Fix
- Surface Mounted

FEATURES:

- Quality indicator locks, coat hooks & hinges
- Robust & Durable Fittings
- Door opening or closing is spring assisted
- Fully Adjustable Spring Hinges to suit door
- Can be set to Hold Open / Hold Closed
- Disabled Lock Option

| DURAPLAN 100 SERIES



| DURAPLAN 200 SERIES



| DIMENSION DETAILS

Duraplan Cubicle Partitions are customised to fit your measurements, depths and widths can be varied to suit. The City Trim Kindy Range standard dimensions are:

- Height 1200mm
- Depth 1200mm-1500mm
- Standard Cubicle Doors are 600mm
- Open-in door option is recommended for standard cubicles
- Accessible /Disabled Cubicles:
 - 1900 x 1600mm (Toilet & Basin)
 - 2100 x 1900mm (Toilet, Shower & Basin)
 - 788 mm Doors - Swing Hinge or sliding doors

| WARRANTY DETAILS

- 10 Years on Panel Integrity
- 2 Years on Hardware
- 2 Years on Installation

Please contact us for Colour Samples or for further product information & details.

WWW.DURAPLAN.CO.NZ



**Contact the Restroom Specialists
today for all product enquiries or
to request a free consultation.**

sales@duraplan.co.nz | 09 972 7682

www.duraplan.co.nz