



DuraPlan
— RESTROOMS —

TECHNICAL GUIDE

Duralam Wall Panelling

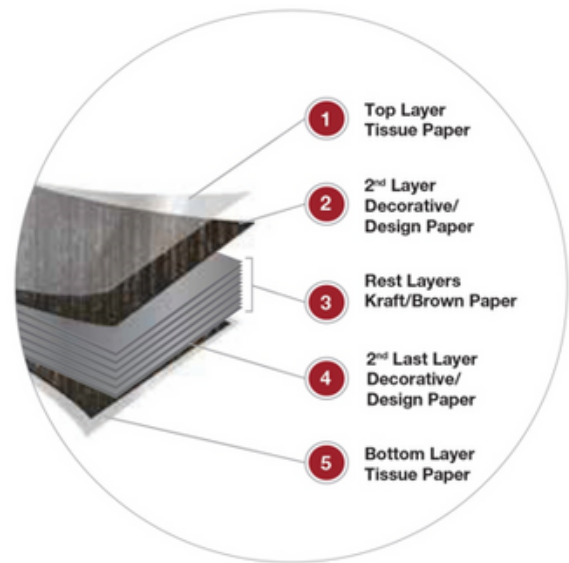
Panels that are beautiful in appearance and exceptional in performance.

09 972 7682
sales@duraplan.co.nz
www.duraplan.co.nz

Duralam 6mm & 3mm Compact Laminate Wall Panelling

| SYSTEM INFORMATION

- 6mm & 3mm Compact Laminate Panels - Standard 2440mm x 1220mm
- Specially designed aluminium joiners - internal, external, straight-H Joiners and capping
- Impact, moisture, wear & graffiti resistant
- Decorative and digital Panels available
- Dry Areas 6mm panels: Resistant backing Lining not required - substrate backing optional (possible to be fixed direct to frame)
- Hygienic & antibacterial properties
- A self-supporting panel that can be used with minimal structural support, providing a clean, uninterrupted, minimal look



| PANEL INFORMATION

- Resistance too: Impact, Moisture, Wear & Graffiti
- 6mm & 3mm Compact Laminate Panels made from thermosetting resins to IS EN 438-4
- Antibacterial certified to JIS Z 2801:2000 - Antibacterial Properties that actively destroy 99% of all common bacteria's
- Fire protection - NZBC C/AS2 - AS7
- Duralam Compact Laminate Panels are sourced from an ISO 9001, ISO 14001 and OHSAS 18001 approved and FSC certified company
- We offer a 10 year guarantee on panel integrity
- Duralam Compact Laminate Panels are certified for low chemical emissions and are all Greenguard certified

| ALUMINIUM INFORMATION

Jointers and Corner Profiles:

- Extruded Aluminium alloy 6063 with silver anodised finish
- Extrusions may be powder coated to any colour as an optional extra.
- Sections to include capping, internal and external corner and jointer in 2440mm lengths as standard.

Aluminium Joints Colour Options:

- Silver Anodised (Standard)
- Black Anodised
- Powder Coated (any colour from the Dulux Range)

| PANEL COLOUR OPTIONS

The Duralam 6mm & 3mm Wall Panelling is available in:

- DuraLam Panel Colour Range - stocked & Extended Range
- Laminex Colour Range

| PANEL FINISH OPTIONS

The Compact Laminate Panel Finish is available in:

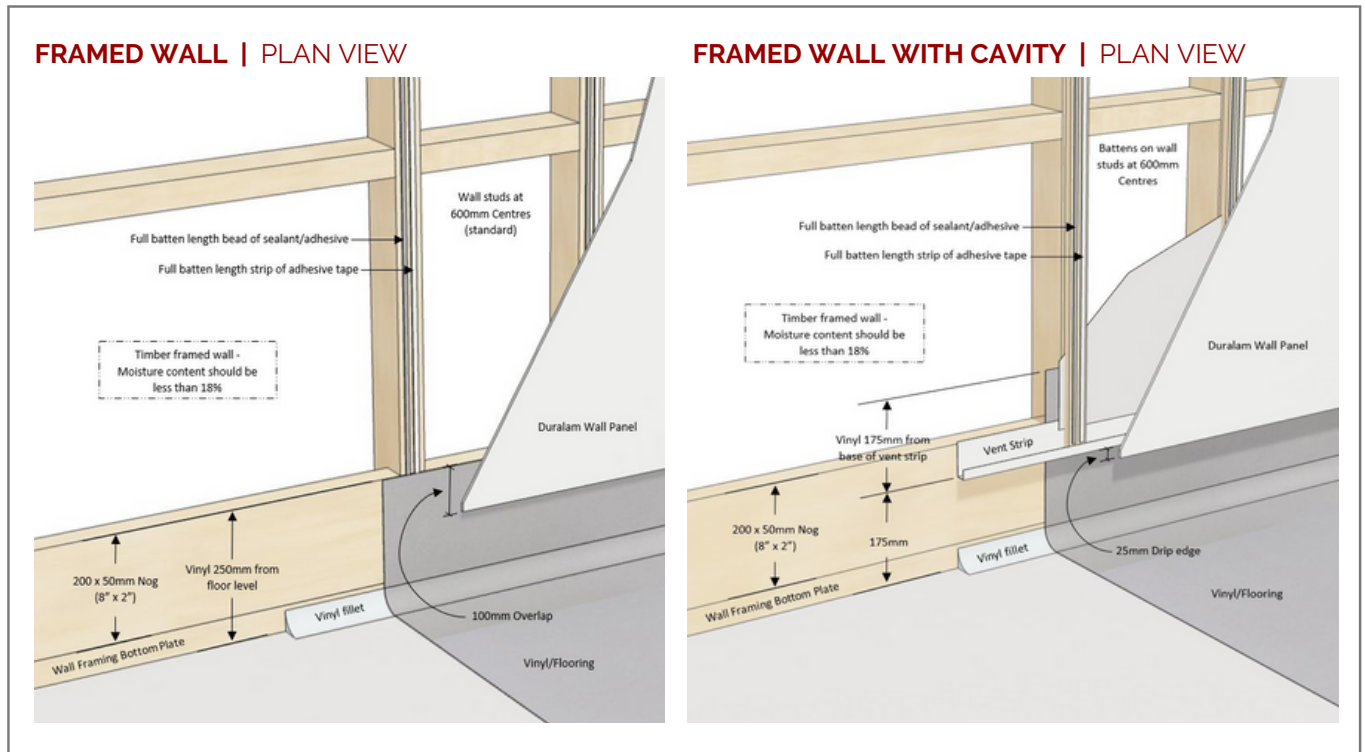
- Suede (Standard)
- Gloss
- Decorative Laminates
- Anti Finger Print

| WARRANTY DETAILS

Our Standard Warranties are:

- 10 Years on Panel Integrity
- 2 Years on Hardware
- 2 Years on Installation

Duralam 6mm & 3mm Compact Laminate Wall Panelling



| DIMENSION DETAILS

- **Duralam sheets are available in:**
 - Standard 2440 x 1220 x 6mm/3mm
 - 2440 x 1830mm
 - 3050 x 1220mm
- Duralam 6mm Wall Panels can be fixed either horizontally or vertically however the grain in some of the panel colours need to be considered.

| DURALAM APPLICATIONS

- Wet Areas: 6mm panels must be fixed over a cavity batten system as required
- Dry Areas: 6mm & 3mm panels can be fixed direct to a substrate backing lining (e.g. GIB)
- Dry Areas: 6mm Panels can be fixed direct to framing
- NOTE: Please refer to Duraplan Consultant for recommended applications

| ACCESSORIES

- Bonding Tape & Glue
- Vent Stripes (if required)
- Battens (if required)
- Building Paper (if required)

| Antibacterial Compact Laminate Improving Your Environment.

The DuraLam Panel. is a Antibacterial Compact Laminate that eliminates the growth of nearly 99% of common forms of bacteria on any surface.

| WARRANTY DETAILS

- 10 Years on Panel Integrity
- 2 Years on Hardware
- 2 Years on Installation

Please contact us for Colour Samples or for further product information & details. 09 972 7682

WWW.DURAPLAN.CO.NZ



Contact the Restroom Specialists today for all product enquiries or to request a free consultation. Simply scan this QR Code to get immediate access to this products web page.
sales@duraplan.co.nz | 09 972 7682
www.duraplan.co.nz

