



**DuraPlan**  
— RESTROOMS —

## TECHNICAL GUIDE

---

# City Trim Range

Premium Partitions for Top-of-the-Range Bathrooms.

---

09 972 7682  
[sales@duraplan.co.nz](mailto:sales@duraplan.co.nz)  
[www.duraplan.co.nz](http://www.duraplan.co.nz)

## Resistant to : Impact, Moisture, Wear & Graffiti

### | SYSTEM INFORMATION

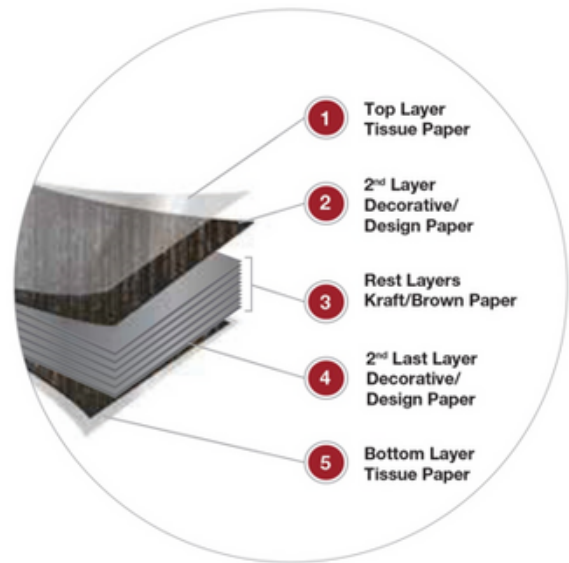
- 13mm compact laminate panels which are anti-bacterial, impact, moisture, wear and graffiti resistant, easy to clean/keep clean and have a 10-year panel integrity
- Solid Aluminium foot base/ Pilaster base. Spans the width of the pilasters
- Full length U-Channels at intersecting wall junctions
- Clean, flush front façade with no aluminium edging - clean rebated joins where doors and pilasters meet, providing total privacy
- No Headrail
- 1975mm High
- Quality brushed stainless indicator locks, coat hooks & hinges

### | PANEL INFORMATION

- Available in standard 13mm thickness
- 13mm resin bonded core, Compact Laminate tested to IS EN 438-4
- Resistance too: Impact, Moisture, Wear & Graffiti
- Antibacterial - JIS 2 2801: Antibacterial eliminates the growth of early 99% of common forms of bacteria on any DuraLam surface growth of nearly 99% of common forms of bacteria
- Fire protection - NZBC C/AS2 - AS7
- We offer a 10 year guarantee on panel integrity
- Duralam Compact Laminate Panels are Greenguard

### | ALUMINIUM INFORMATION

- **ALUMINIUM PILASTER BASE:** 90mm x 35mm extruded aluminium with 13mm panel cavity for pilasters. Silver or black anodised or powder coated finish
- **SUPPORT POST:** Square 40mm x 40mm Extruded Aluminium alloy 6060 with exposed face with anodised or powder coated finish.
- **WALL CHANNEL:** 13mm x 30mm x 25mm Extruded Aluminium alloy 6060 with exposed face with anodised or powder coated finish.
- **COLOUR OPTIONS:**
  - Silver Anodised (Standard)
  - Black Anodised
  - Powder Coated (Colours from the Dulux Range)



### | PANEL COLOUR OPTIONS

The City Trim Range is available in:

- DuraLam Panel Colour Range - stocked & Extended Range
- Laminex Colour Range

### | PANEL FINISH OPTIONS

The Compact Laminate Panel Finish is available in:

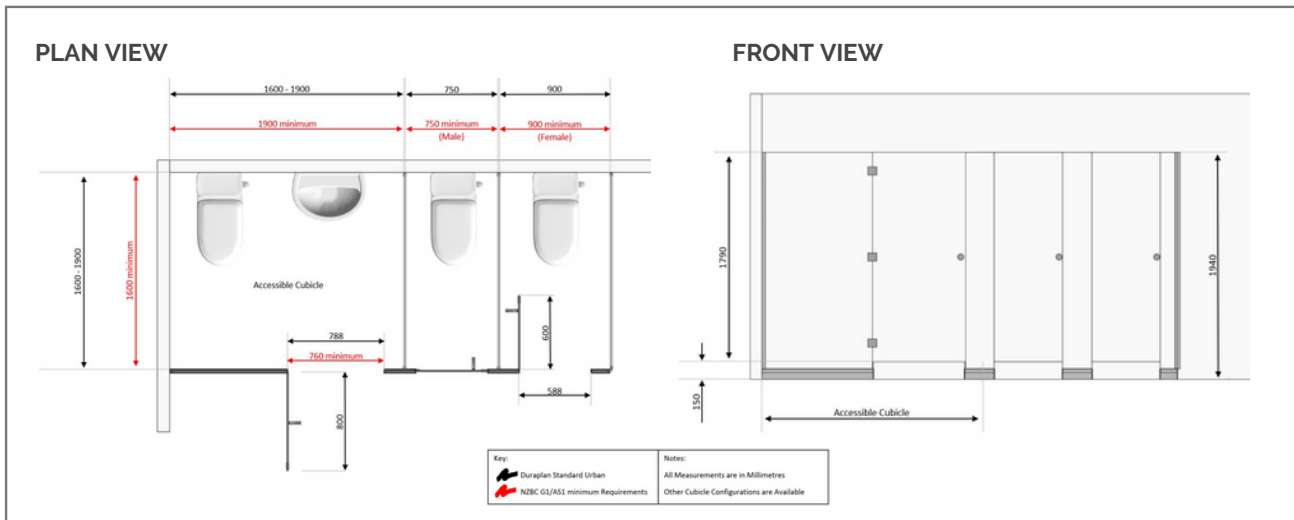
- Suede (Standard)
- Finguard ( Anti-fingerprint)
- Gloss
- Decorative

### | WARRANTY DETAILS

Our Standard Warranties are:

- 10 Years on Panel Integrity
- 2 Years on Hardware
- 2 Years on Installation

## Resistant to : Impact, Moisture, Wear & Graffiti



### | HARDWARE INFORMATION

#### FINISH:

- Quality and solid stainless hardware
- Black Powder Coated

#### MOUNTING:

- Concealed Screw Fix
- Surface Mounted

#### FEATURES:

- Quality indicator locks, coat hooks & hinges
- Robust & Durable Fittings
- Door opening or closing is spring assisted
- Fully Adjustable Spring Hinges to suit door
- Can be set to Hold Open / Hold Closed
- We offer a 2 Year Hardware Warranty
- Disabled Lock Option

### | DURAPLAN 100 SERIES



### | DURAPLAN 200 SERIES



### | DIMENSION DETAILS

Duraplan Cubicle Partitions are customised to fit your measurements, depths and widths can be varied to suit. The City Trim Range standard dimensions are:

- Height 1975mm with 150mm floor clearance
- Depth 1600mm-1830mm
- Standard Cubicle Doors are 600mm
- Open-in door option is recommended for standard cubicles
- Accessible /Disabled Cubicles:
  - 1900 x 1600mm (Toilet & Basin)
  - 2100 x 1900mm (Toilet, Shower & Basin)
  - 788 mm Doors - Swing Hinge or sliding doors

### | WARRANTY DETAILS

- 10 Years on Panel Integrity
- 2 Years on Hardware
- 2 Years on Installation

Please contact us for Colour Samples or for further product information & details.

[WWW.DURAPLAN.CO.NZ](http://WWW.DURAPLAN.CO.NZ)

**Contact the Restroom Specialists  
today for all product enquiries or to  
request a free consultation. Simply  
scan this QR Code to get immediate  
access to this products web page.**

**sales@duraplan.co.nz | 09 972 7682**

**www.duraplan.co.nz**

